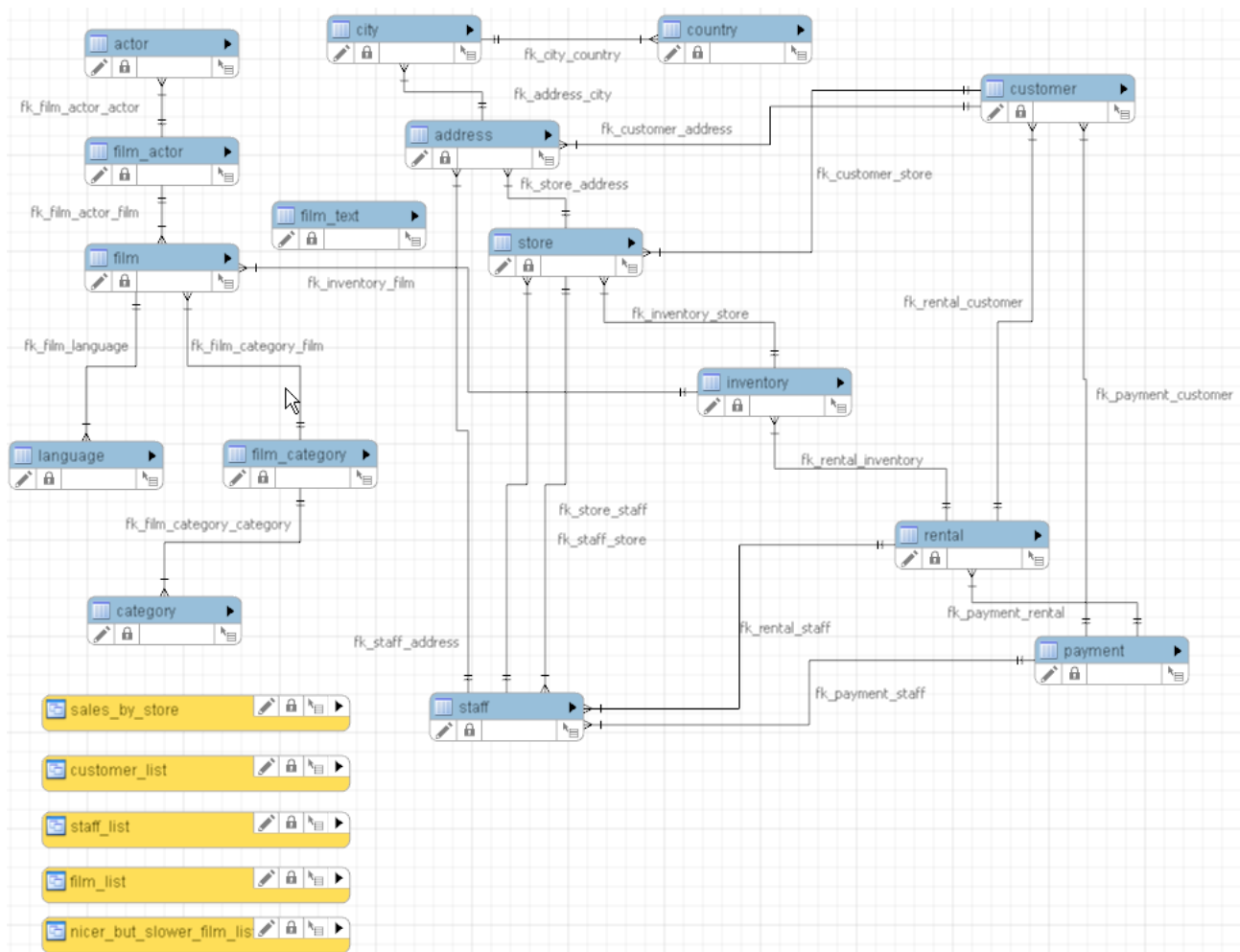


## Descrizione database Sakila per attori e film

Il database Sakila è il database di esempio di MySQL che viene utilizzato in libri, tutorial, ecc. in sostituzione del database World.

Lo schema entità relazioni è il seguente:



Per questa prova verranno usate solo le tabelle *actor*, *film* e la tabella *film\_actor* che rappresenta la relazione N a N tra *film* e *actor*.

Le tre tabelle hanno il seguente schema:

### The actor Table

The **actor** table lists information for all actors.

The **actor** table is joined to the **film** table by means of the **film\_actor** table.

### Columns

- **actor\_id**: A surrogate primary key used to uniquely identify each actor in the table.
- **first\_name**: The actor's first name.
- **last\_name**: The actor's last name.
- **last\_update**: The time that the row was created or most recently updated.

## ***The film Table***

The `film` table is a list of all films potentially in stock in the stores. The actual in-stock copies of each film are represented in the `inventory` table.

The `film` table refers to the `language` table and is referred to by the `film_category`, `film_actor`, and `inventory` tables.

### **Columns**

- `film_id`: A surrogate primary key used to uniquely identify each film in the table.
- `title`: The title of the film.
- `description`: A short description or plot summary of the film.
- `release_year`: The year in which the movie was released.
- `language_id`: A foreign key pointing at the `language` table; identifies the language of the film.
- `original_language_id`: A foreign key pointing at the `language` table; identifies the original language of the film. Used when a film has been dubbed into a new language.
- `rental_duration`: The length of the rental period, in days.
- `rental_rate`: The cost to rent the film for the period specified in the `rental_duration` column.
- `length`: The duration of the film, in minutes.
- `replacement_cost`: The amount charged to the customer if the film is not returned or is returned in a damaged state.
- `rating`: The rating assigned to the film. Can be one of: G, PG, PG-13, R, or NC-17.
- `special_features`: Lists which common special features are included on the DVD. Can be zero or more of: Trailers, Commentaries, Deleted Scenes, Behind the Scenes.
- `last_update`: The time that the row was created or most recently updated.

## ***The film\_actor Table***

The `film_actor` table is used to support a many-to-many relationship between films and actors. For each actor in a given film, there will be one row in the `film_actor` table listing the actor and film.

The `film_actor` table refers to the `film` and `actor` tables using foreign keys.

### **Columns:**

- `actor_id`: A foreign key identifying the actor.
- `film_id`: A foreign key identifying the film.
- `last_update`: The time that the row was created or most recently updated.